
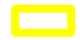


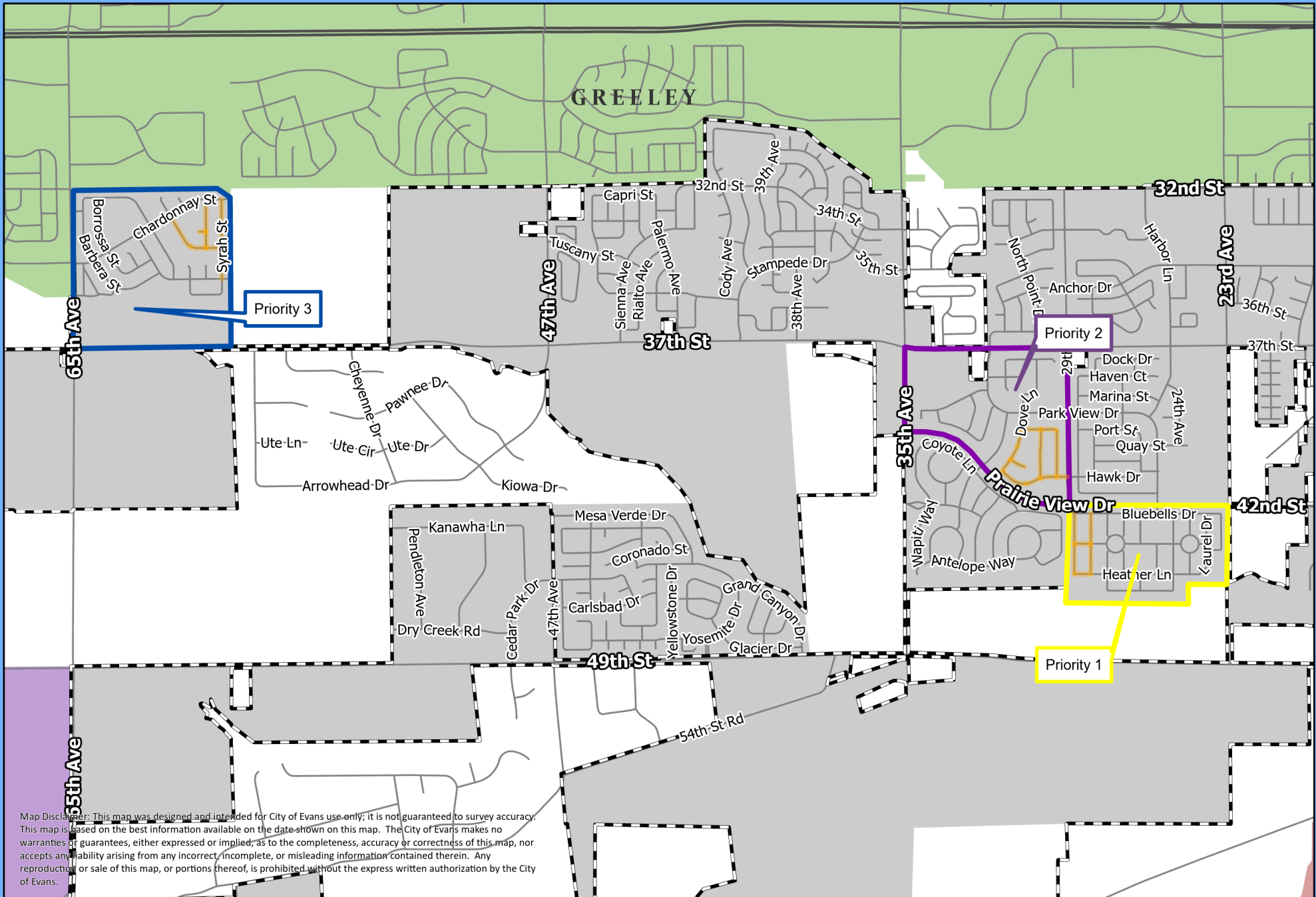


# 2024 Asphalt Patch Project

 Hunter's Reserve  
 The Ridge at Prairie View

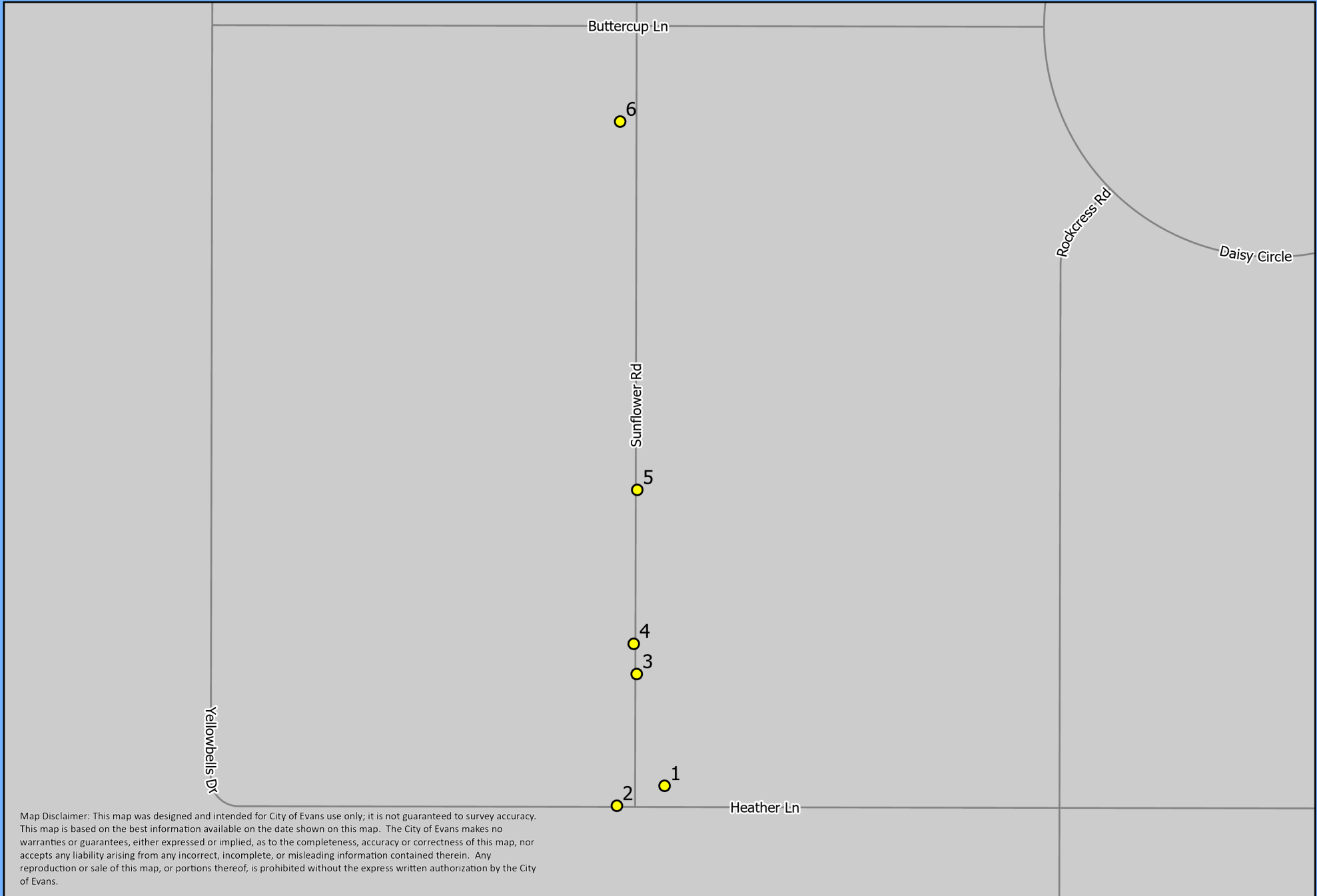
 Grapevine Hallow  
 Roads to be Asphalt Patched



Map Disclaimer: This map was designed and intended for City of Evans use only; it is not guaranteed to survey accuracy. This map is based on the best information available on the date shown on this map. The City of Evans makes no warranties or guarantees, either expressed or implied, as to the completeness, accuracy or correctness of this map, nor accepts any liability arising from any incorrect, incomplete, or misleading information contained therein. Any reproduction or sale of this map, or portions thereof, is prohibited without the express written authorization by the City of Evans.

# 2024 Asphalt Patch Priority 1 The Ridge at Prairie View

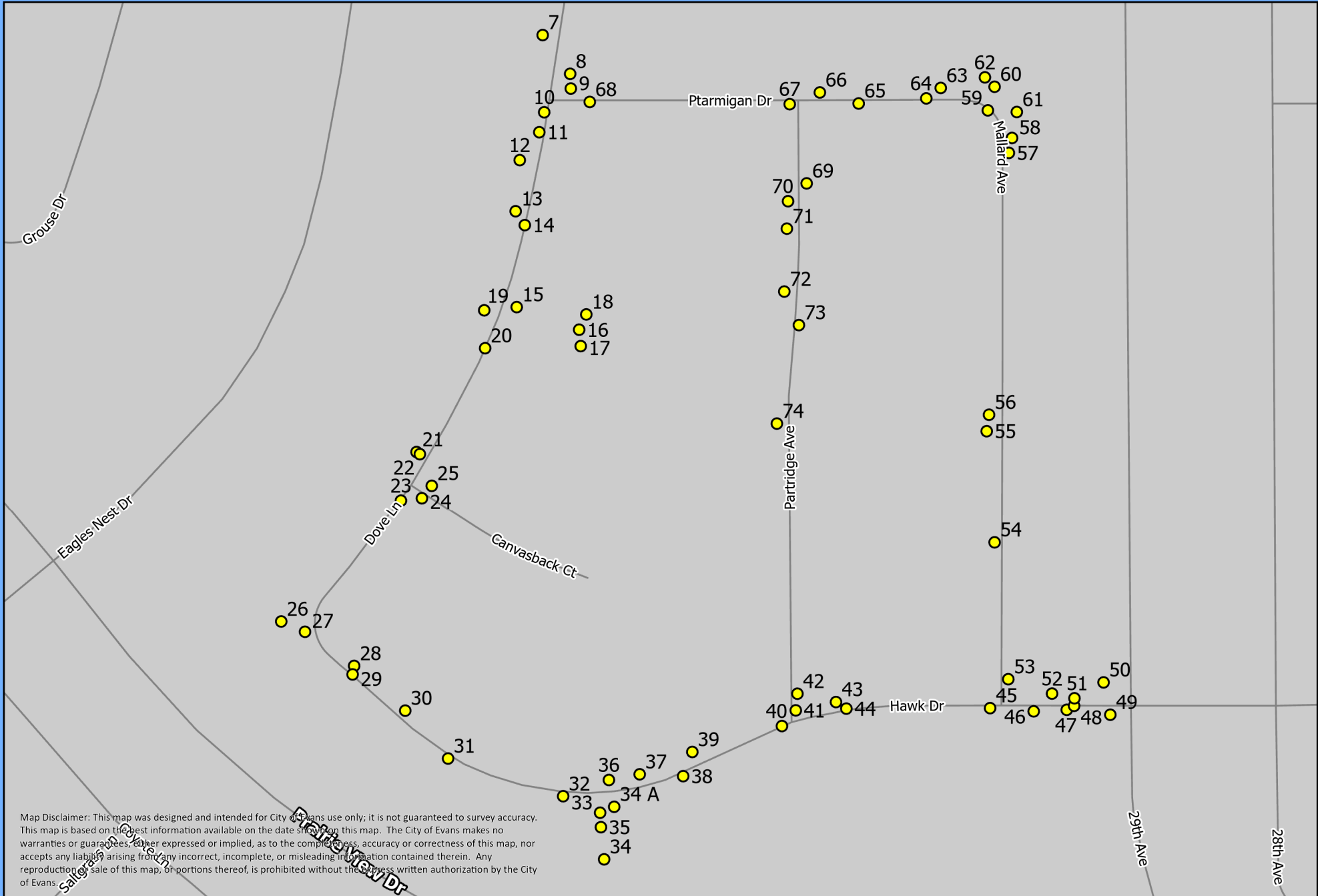
● Asphalt Patch



Map Disclaimer: This map was designed and intended for City of Evans use only; it is not guaranteed to survey accuracy. This map is based on the best information available on the date shown on this map. The City of Evans makes no warranties or guarantees, either expressed or implied, as to the completeness, accuracy or correctness of this map, nor accepts any liability arising from any incorrect, incomplete, or misleading information contained therein. Any reproduction or sale of this map, or portions thereof, is prohibited without the express written authorization by the City of Evans.

# 2024 Asphalt Patch Priority 2 Hunter's Reserve

● Asphalt Patch



Map Disclaimer: This map was designed and intended for City of Evans use only; it is not guaranteed to survey accuracy. This map is based on the best information available on the date shown on this map. The City of Evans makes no warranties or guarantees, either expressed or implied, as to the completeness, accuracy or correctness of this map, nor accepts any liability arising from any incorrect, incomplete, or misleading information contained therein. Any reproduction or sale of this map, or portions thereof, is prohibited without the express written authorization by the City of Evans.

# 2024 Asphalt Patch Priority 3 Grapevine Hollow

● Asphalt Patch



## GREELEY



Map Disclaimer: This map was designed and intended for City of Evans use only; it is not guaranteed to survey accuracy. This map is based on the best information available on the date shown on this map. The City of Evans makes no warranties or guarantees, either expressed or implied, as to the completeness, accuracy or correctness of this map, nor accepts any liability arising from any incorrect, incomplete, or misleading information contained therein. The reproduction or sale of this map, or portions thereof, is prohibited without the express written authorization by the City of Evans.