
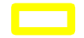


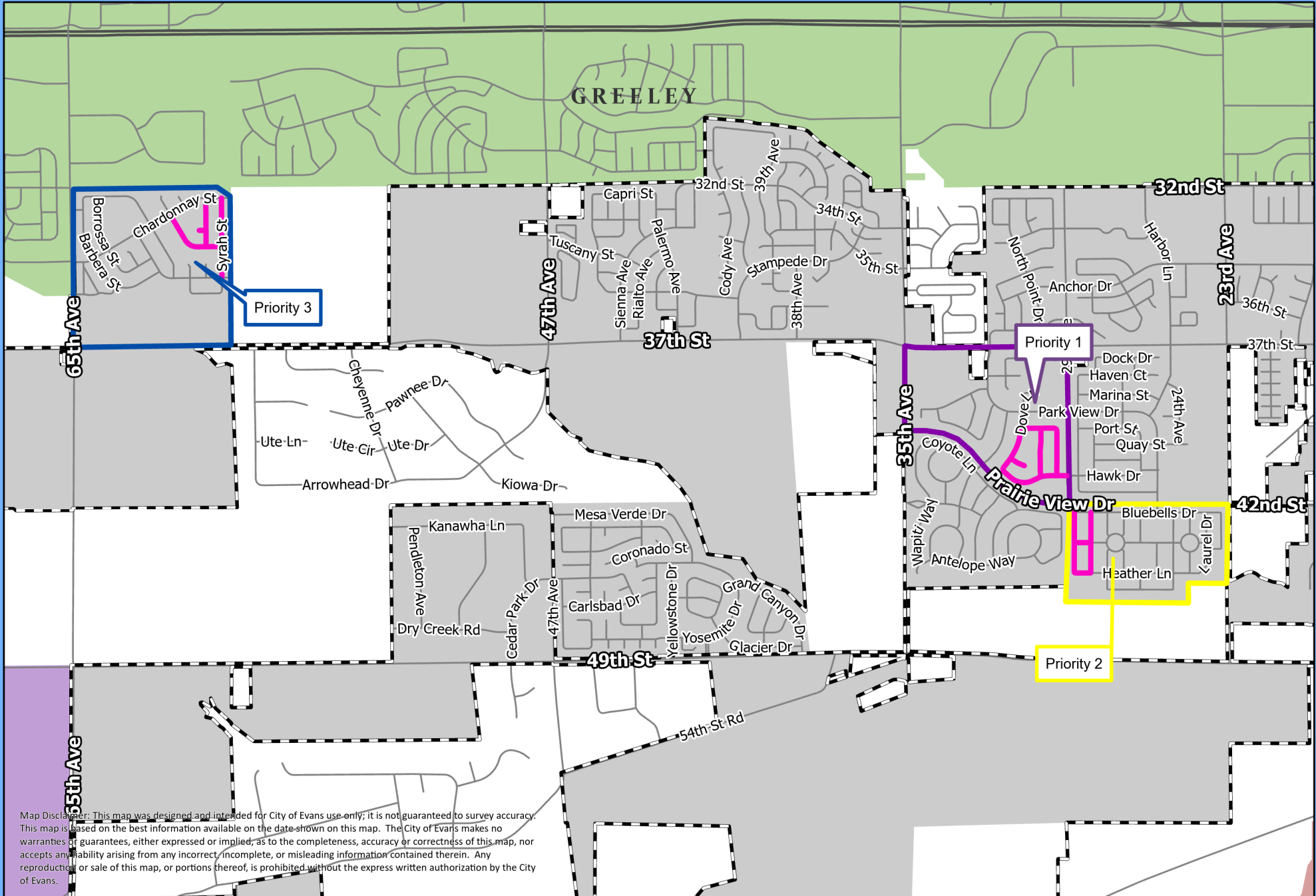


2024 Asphalt Surface Treatment

 Hunter's Reserve
 The Ridge at Prairie View


 Grapevine Hallow
 Roads to be Asphalt Patched

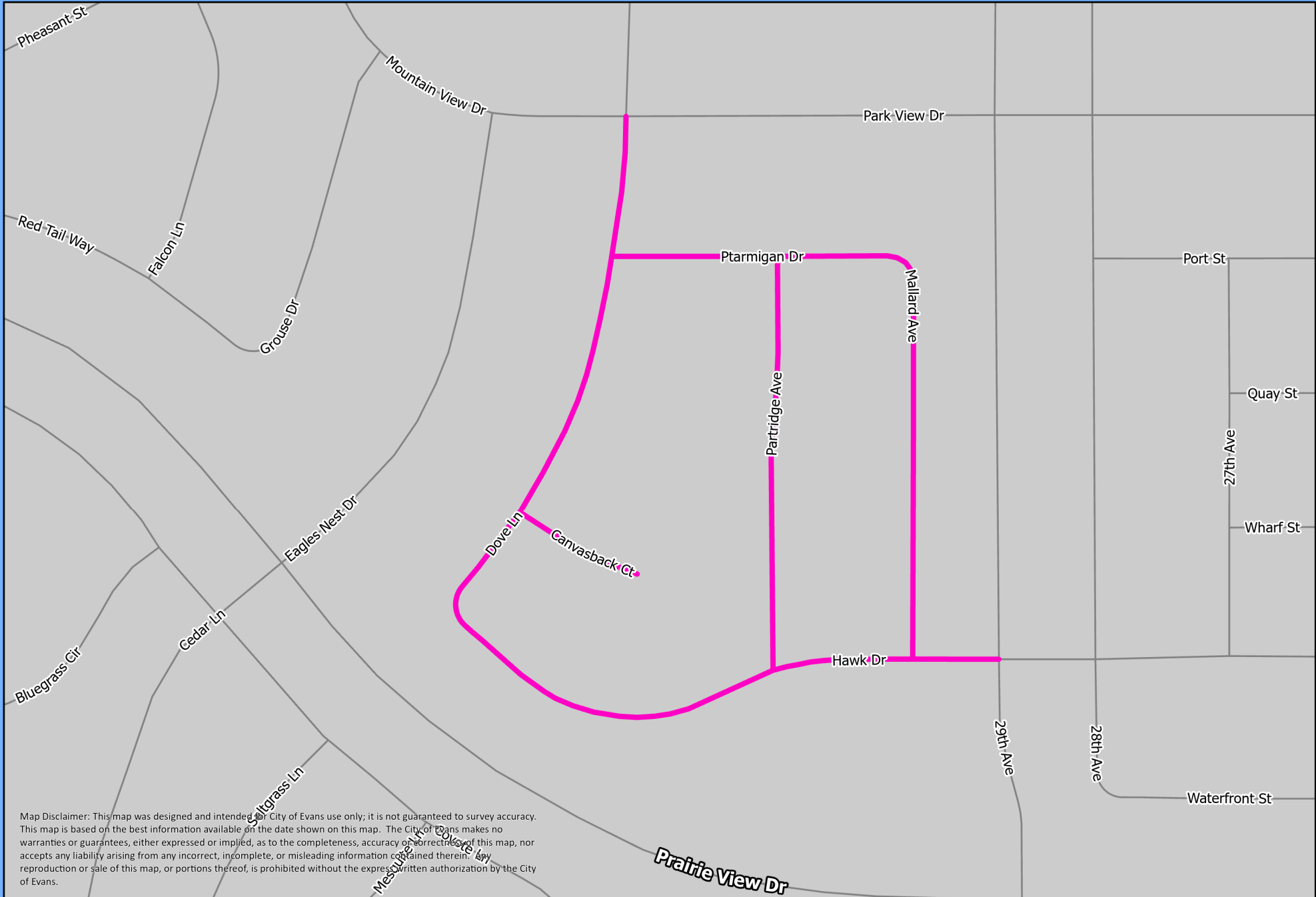


Map Disclaimer: This map was designed and intended for City of Evans use only; it is not guaranteed to survey accuracy. This map is based on the best information available on the date shown on this map. The City of Evans makes no warranties or guarantees, either expressed or implied, as to the completeness, accuracy or correctness of this map, nor accepts any liability arising from any incorrect, incomplete, or misleading information contained therein. Any reproduction or sale of this map, or portions thereof, is prohibited without the express written authorization by the City of Evans.



2024 Asphalt Surface Treatment Priority 1 Hunter's Reserve

 Roads to be Asphalt Patched

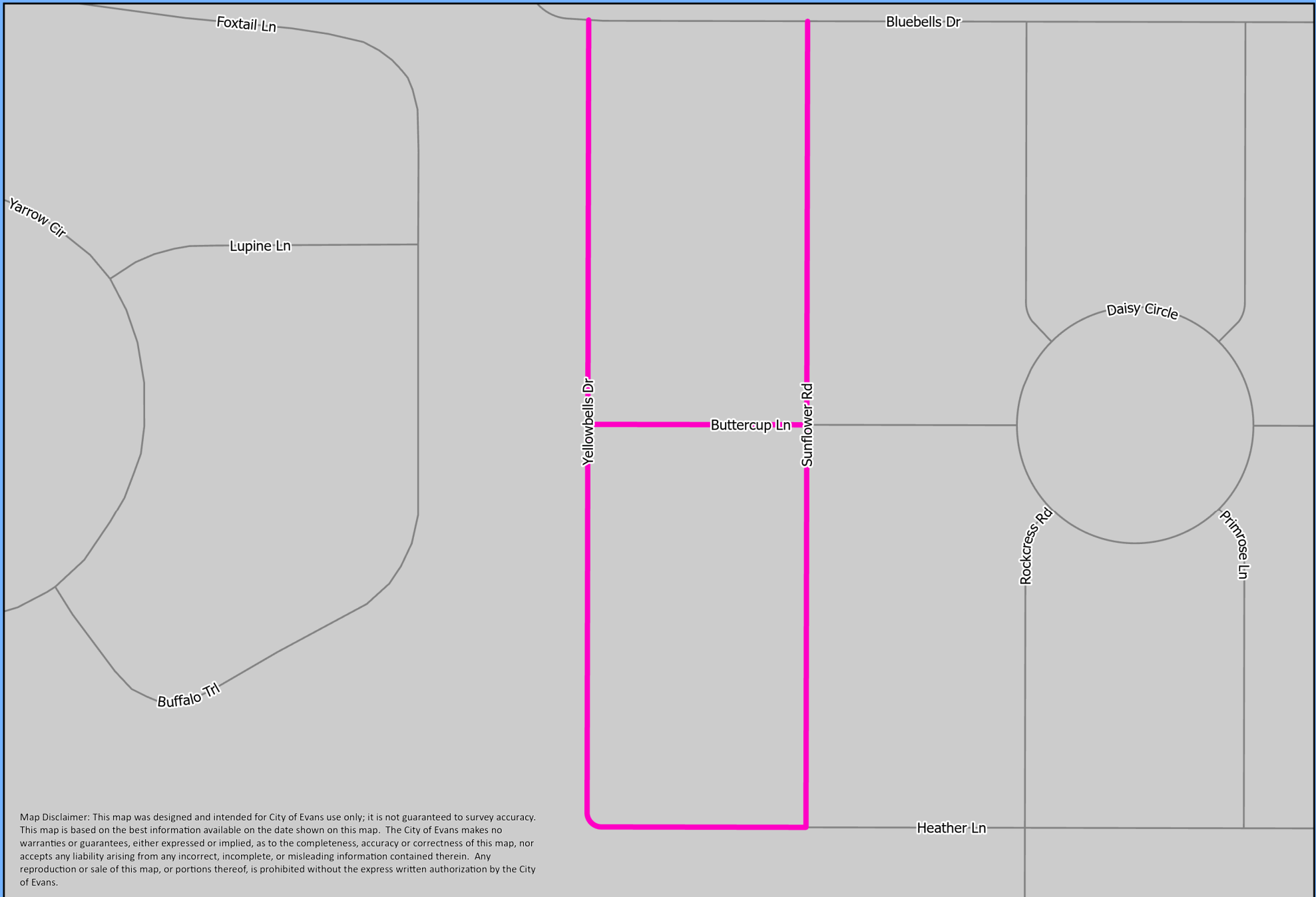


Map Disclaimer: This map was designed and intended for City of Evans use only; it is not guaranteed to survey accuracy. This map is based on the best information available on the date shown on this map. The City of Evans makes no warranties or guarantees, either expressed or implied, as to the completeness, accuracy or correctness of this map, nor accepts any liability arising from any incorrect, incomplete, or misleading information contained therein. Any reproduction or sale of this map, or portions thereof, is prohibited without the express written authorization by the City of Evans.



2024 Asphalt Surface Treatment Priority 2 The Ridge at Prairie View


— Roads to be Asphalt Patched



Map Disclaimer: This map was designed and intended for City of Evans use only; it is not guaranteed to survey accuracy. This map is based on the best information available on the date shown on this map. The City of Evans makes no warranties or guarantees, either expressed or implied, as to the completeness, accuracy or correctness of this map, nor accepts any liability arising from any incorrect, incomplete, or misleading information contained therein. Any reproduction or sale of this map, or portions thereof, is prohibited without the express written authorization by the City of Evans.



2024 Asphalt Surface Treatment Priority 3 Grapevine Hollow

 Roads to be Asphalt Patched



GREELEY



Map Disclaimer: This map was designed and intended for City of Evans use only; it is not guaranteed to survey accuracy. This map is based on the best information available on the date shown on this map. The City of Evans makes no warranties or guarantees, either expressed or implied, as to the completeness, accuracy or correctness of this map, nor accepts any liability arising from any incorrect, incomplete, or misleading information contained therein. The reproduction or sale of this map, or portions thereof, is prohibited without the express written authorization by the City of Evans.