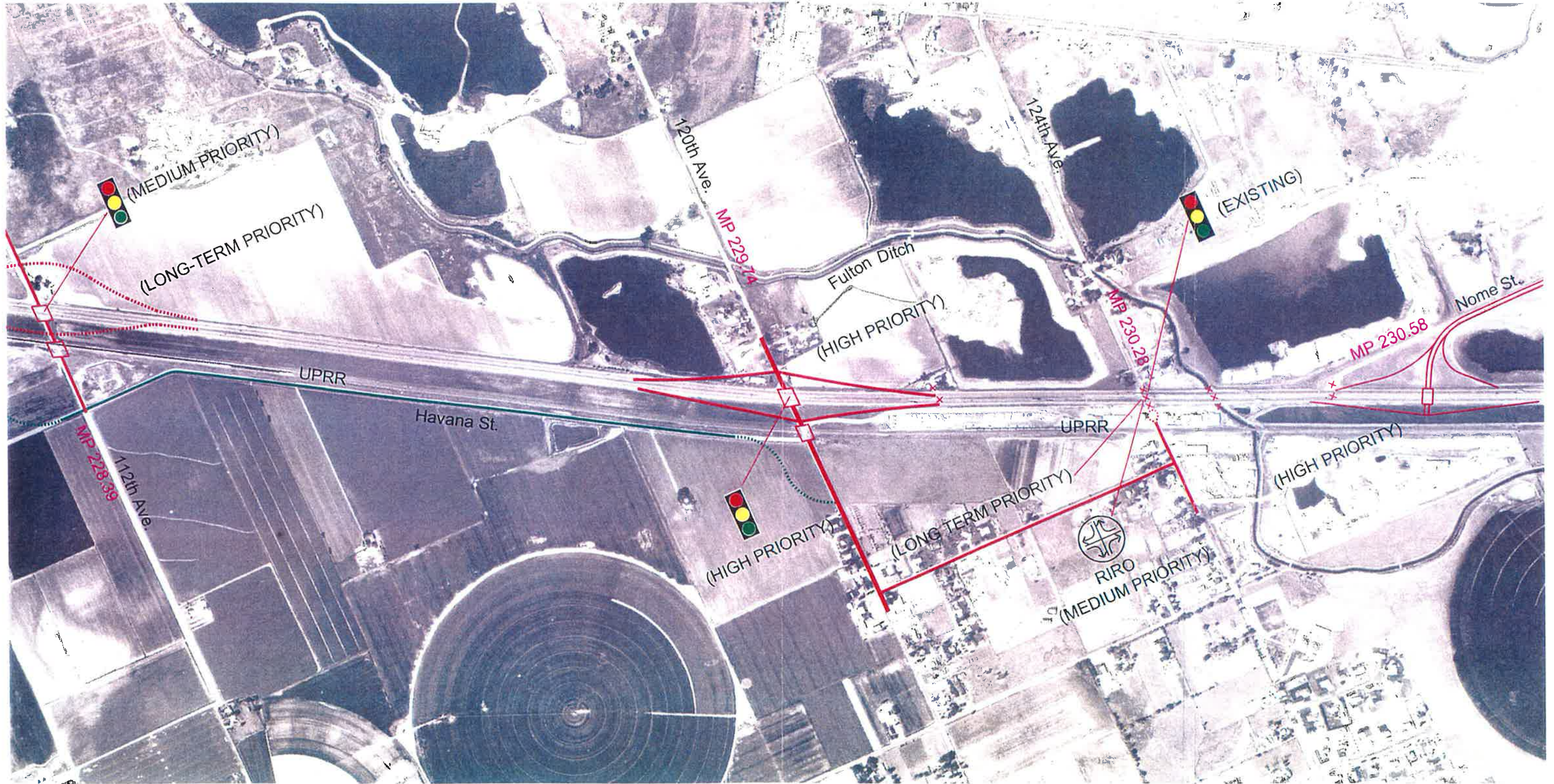


Figure A1

I-76 TO 104TH AVE.

















 IMPROVED ACCELERATION/DECELERATION LANES	 NEW FRONTAGE ROAD	 RAILROAD	 EXISTING OR FUTURE TRAFFIC SIGNAL	 3/4 ACCESS AT A T-INTERSECTION
 ACCESS TO REMAIN OPEN (CONDITIONALLY)	 EXISTING FRONTAGE ROAD	 HIGHWAY ACCESS OR MEDIAN CLOSING TO BE CLOSED	 3/4 ACCESS AT A 4-WAY INTERSECTION	
 NEW PUBLIC ROADWAY	 BRIDGE	 INTERSECTION IMPROVEMENT		
 EXISTING PUBLIC ROADWAY	 RIGHT-IN / RIGHT-OUT ACCESS			

Figure A2

112TH AVE. TO NOME ST.

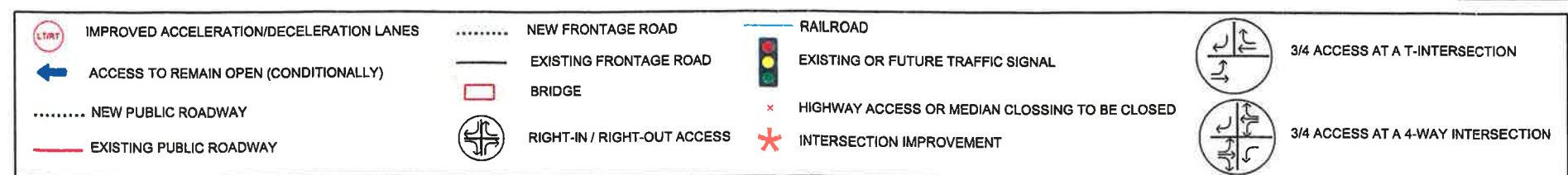
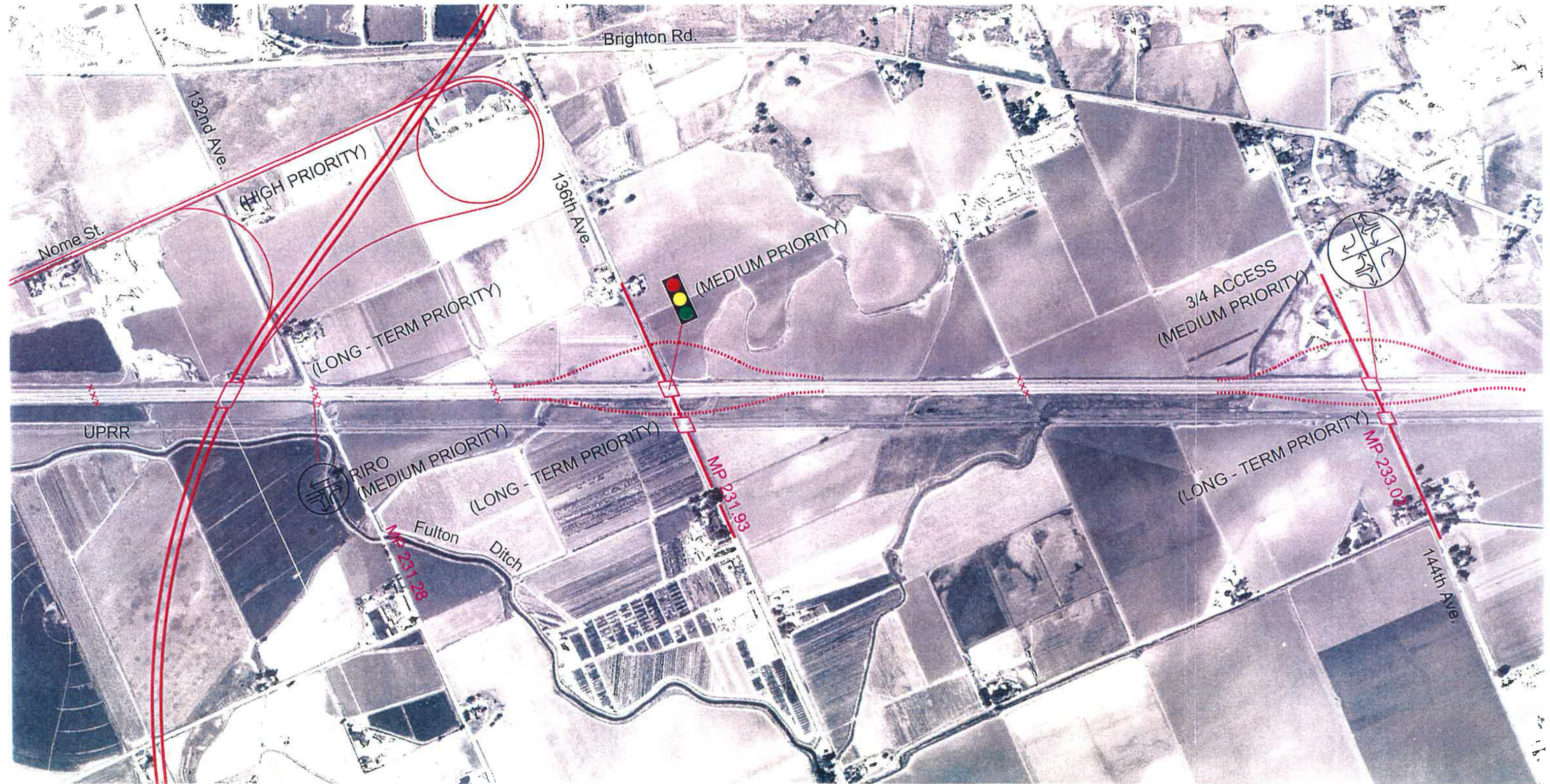


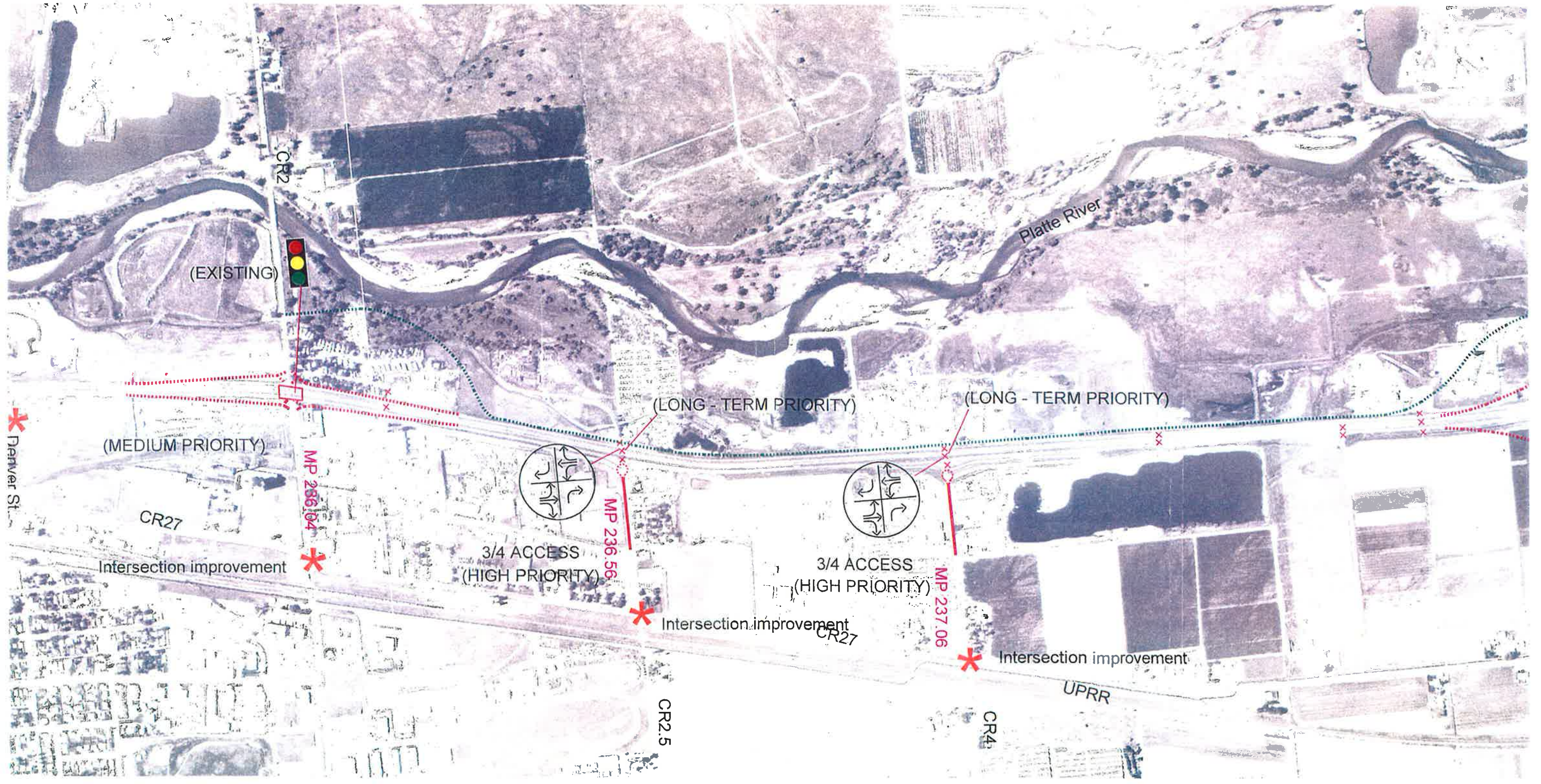
Figure A3

E-470 TO 144TH AVE.



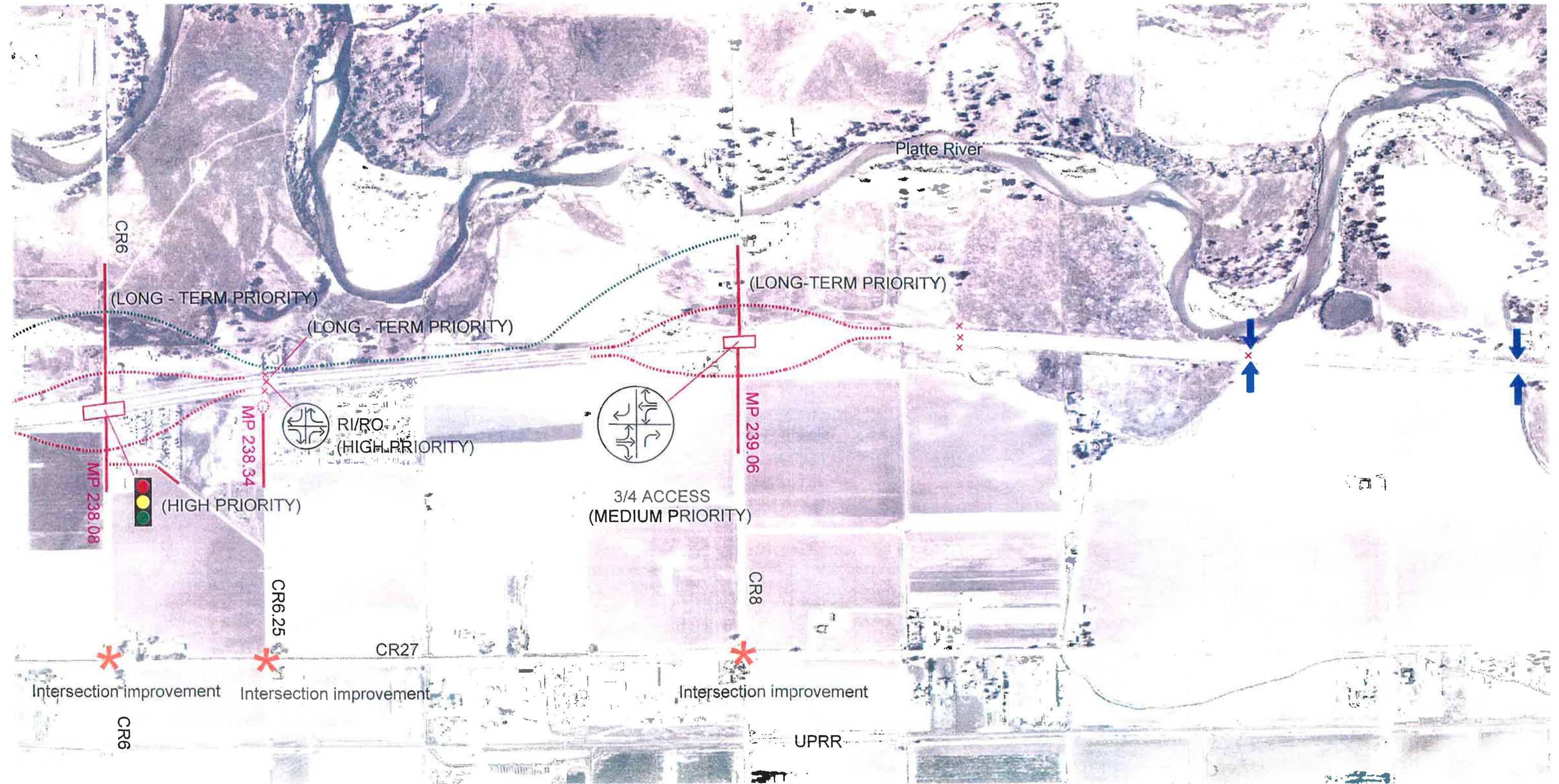
	IMPROVED ACCELERATION/DECELERATION LANES		NEW FRONTAGE ROAD		RAILROAD		EXISTING OR FUTURE TRAFFIC SIGNAL		3/4 ACCESS AT A T-INTERSECTION
	ACCESS TO REMAIN OPEN (CONDITIONALLY)		EXISTING FRONTAGE ROAD		HIGHWAY ACCESS OR MEDIAN CLOSING TO BE CLOSED		INTERSECTION IMPROVEMENT		3/4 ACCESS AT A 4-WAY INTERSECTION
	NEW PUBLIC ROADWAY		BRIDGE		RIGHT-IN / RIGHT-OUT ACCESS				
	EXISTING PUBLIC ROADWAY								

Figure A4
 BRIGHTON
 BROMLEY LN. TO DENVER ST.



	IMPROVED ACCELERATION/DECELERATION LANES	NEW FRONTAGE ROAD	RAILROAD	EXISTING OR FUTURE TRAFFIC SIGNAL	3/4 ACCESS AT A T-INTERSECTION
ACCESS TO REMAIN OPEN (CONDITIONALLY)	EXISTING FRONTAGE ROAD	BRIDGE	HIGHWAY ACCESS OR MEDIAN CROSSING TO BE CLOSED	INTERSECTION IMPROVEMENT	3/4 ACCESS AT A 4-WAY INTERSECTION
NEW PUBLIC ROADWAY	RIGHT-IN / RIGHT-OUT ACCESS				
EXISTING PUBLIC ROADWAY					

Figure A5
 CR2 TO CR4



IMPROVED ACCELERATION/DECELERATION LANES	NEW FRONTAGE ROAD	RAILROAD
ACCESS TO REMAIN OPEN (CONDITIONALLY)	EXISTING FRONTAGE ROAD	EXISTING OR FUTURE TRAFFIC SIGNAL
NEW PUBLIC ROADWAY	BRIDGE	HIGHWAY ACCESS OR MEDIAN CLOSING TO BE CLOSED
EXISTING PUBLIC ROADWAY	RIGHT-IN / RIGHT-OUT ACCESS	INTERSECTION IMPROVEMENT
		3/4 ACCESS AT A T-INTERSECTION
		3/4 ACCESS AT A 4-WAY INTERSECTION

Figure A6
 CR6 TO CR8



	IMPROVED ACCELERATION/DECELERATION LANES		NEW FRONTAGE ROAD		RAILROAD		3/4 ACCESS AT A T-INTERSECTION
	ACCESS TO REMAIN OPEN (CONDITIONALLY)		EXISTING FRONTAGE ROAD		EXISTING OR FUTURE TRAFFIC SIGNAL		3/4 ACCESS AT A 4-WAY INTERSECTION
	NEW PUBLIC ROADWAY		BRIDGE		HIGHWAY ACCESS OR MEDIAN CLOSING TO BE CLOSED		
	EXISTING PUBLIC ROADWAY		RIGHT-IN / RIGHT-OUT ACCESS		INTERSECTION IMPROVEMENT		

Figure A7
 FORT LUPTON
 SH52 TO CR14.5

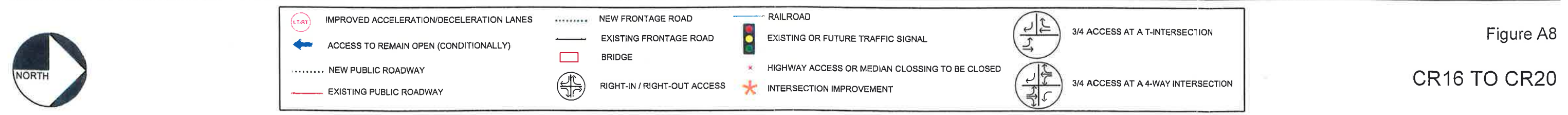
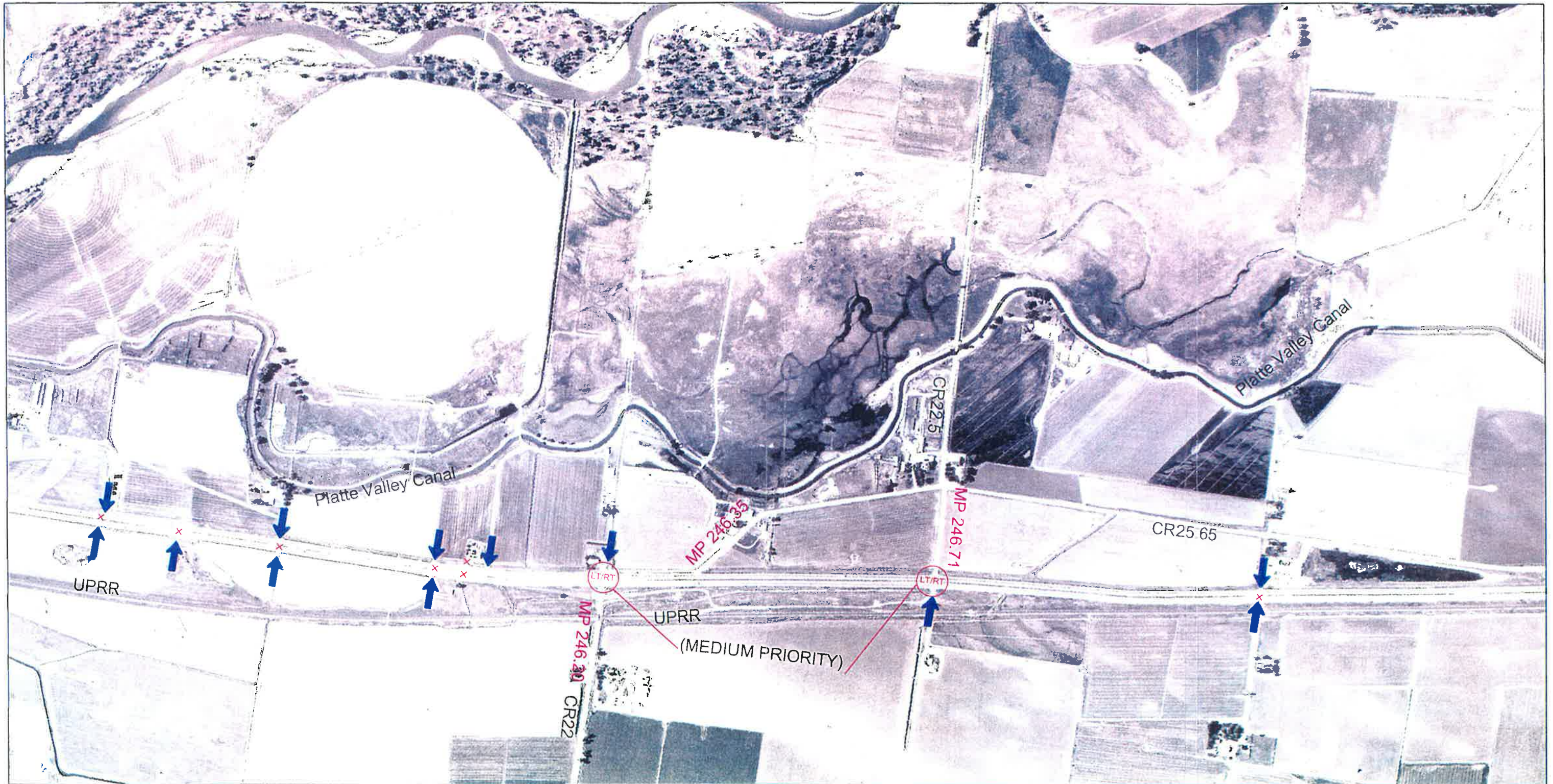


Figure A8

CR16 TO CR20



	IMPROVED ACCELERATION/DECELERATION LANES		NEW FRONTAGE ROAD		RAILROAD		EXISTING OR FUTURE TRAFFIC SIGNAL		3/4 ACCESS AT A T-INTERSECTION
	ACCESS TO REMAIN OPEN (CONDITIONALLY)		EXISTING FRONTAGE ROAD		HIGHWAY ACCESS OR MEDIAN CLOSING TO BE CLOSED		INTERSECTION IMPROVEMENT		3/4 ACCESS AT A 4-WAY INTERSECTION
	NEW PUBLIC ROADWAY		BRIDGE		RIGHT-IN / RIGHT-OUT ACCESS				
	EXISTING PUBLIC ROADWAY								

Figure A9

CR22 TO CR22.5

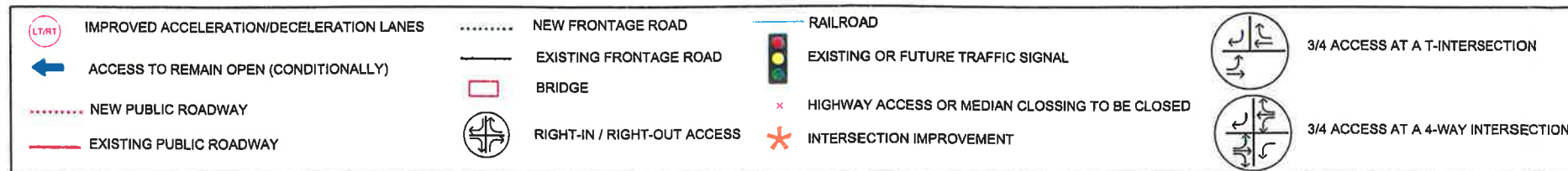


Figure A10

CR24.5 TO CR28

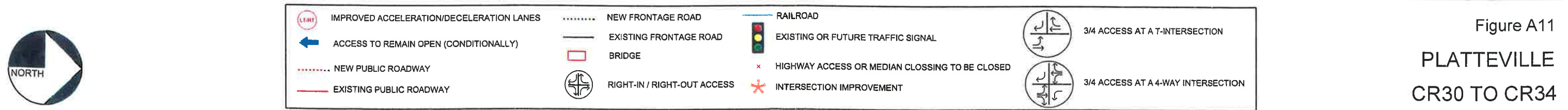
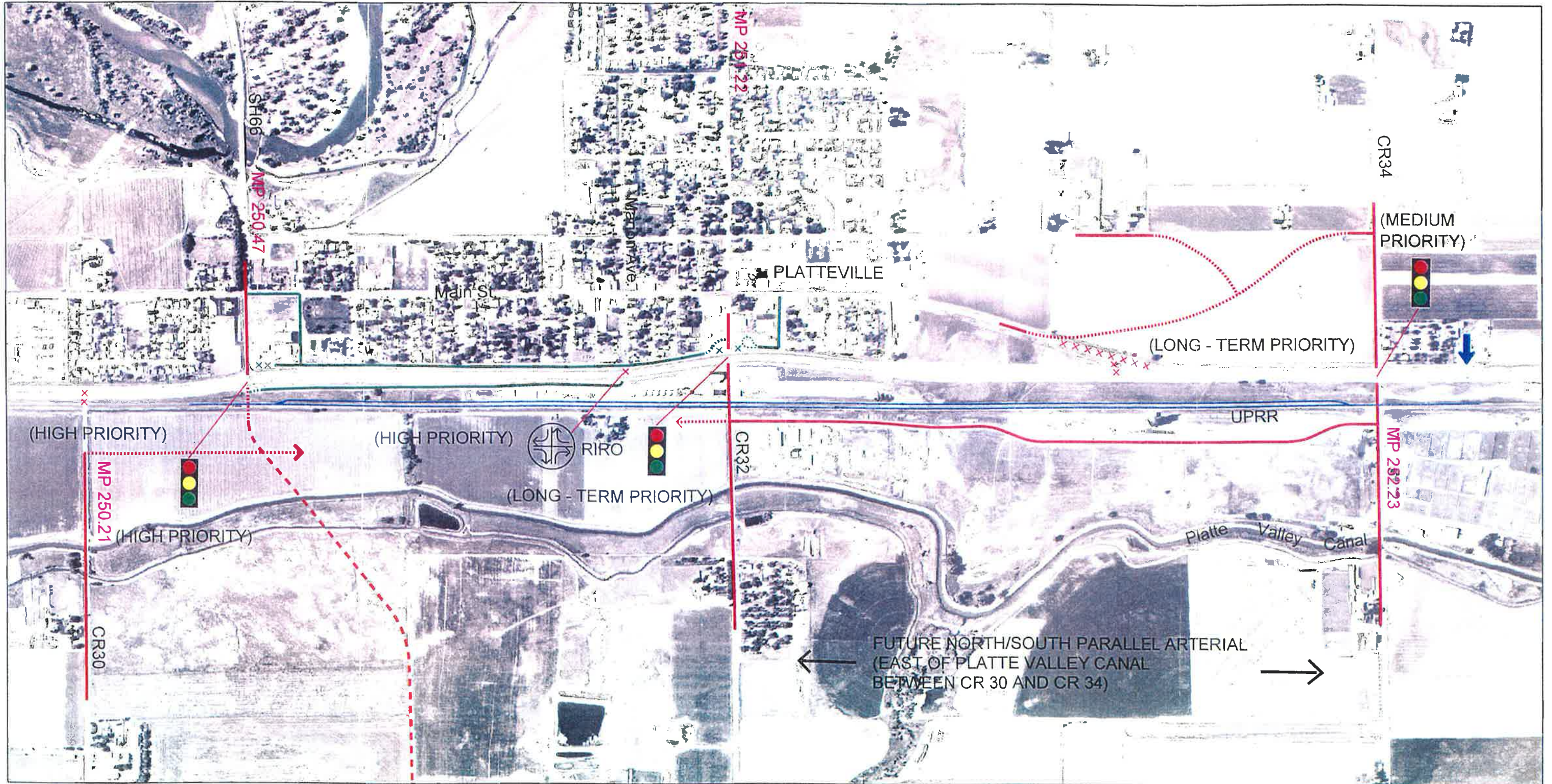


Figure A11
 PLATTEVILLE
 CR30 TO CR34

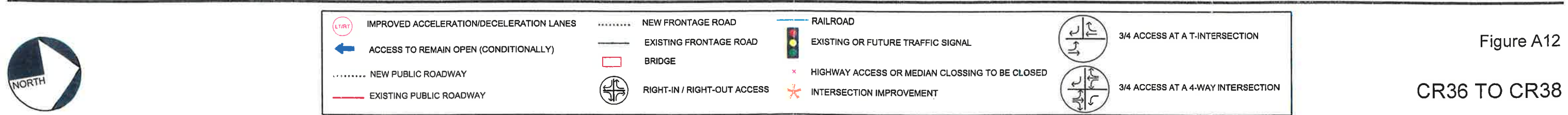
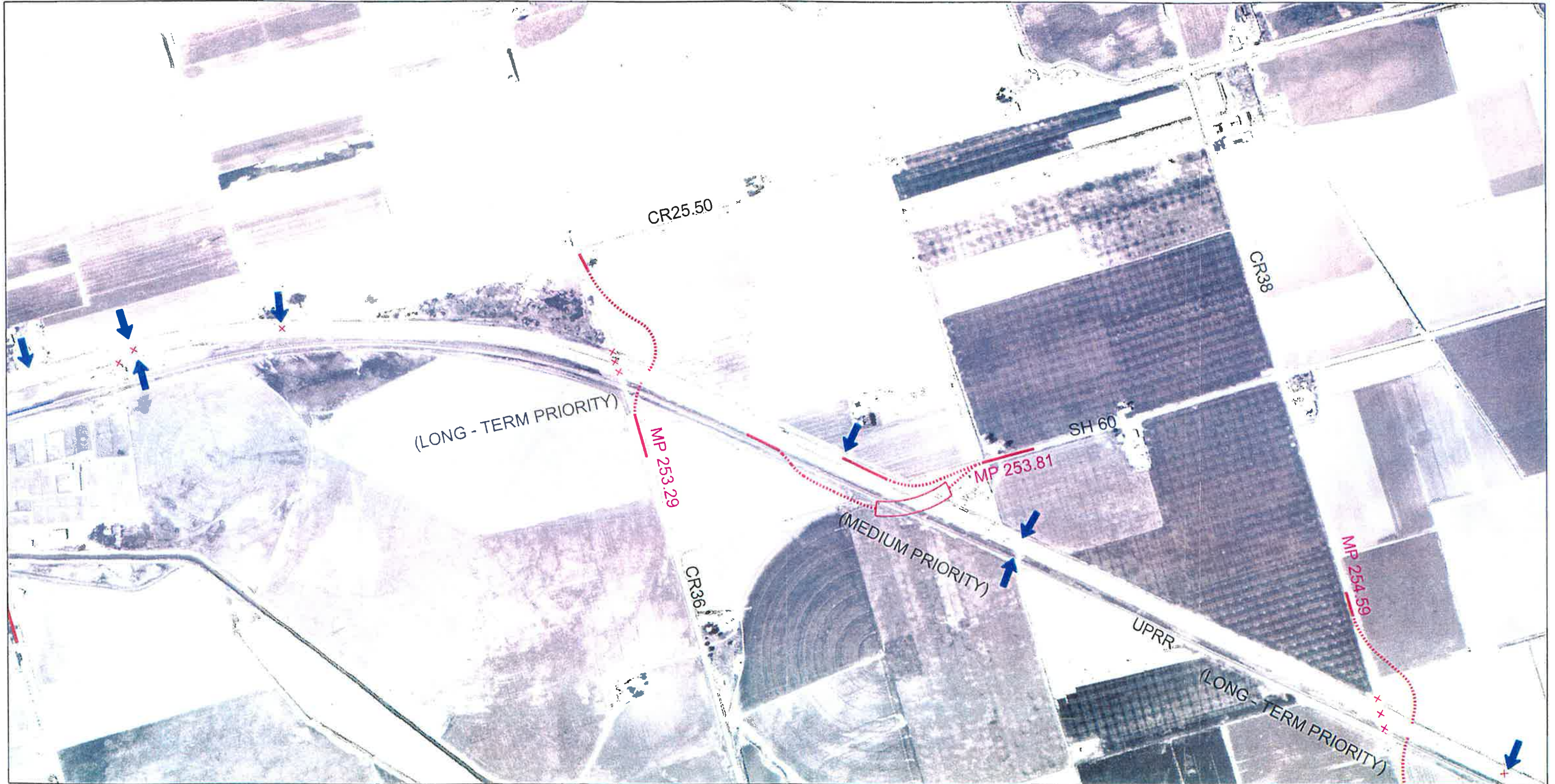
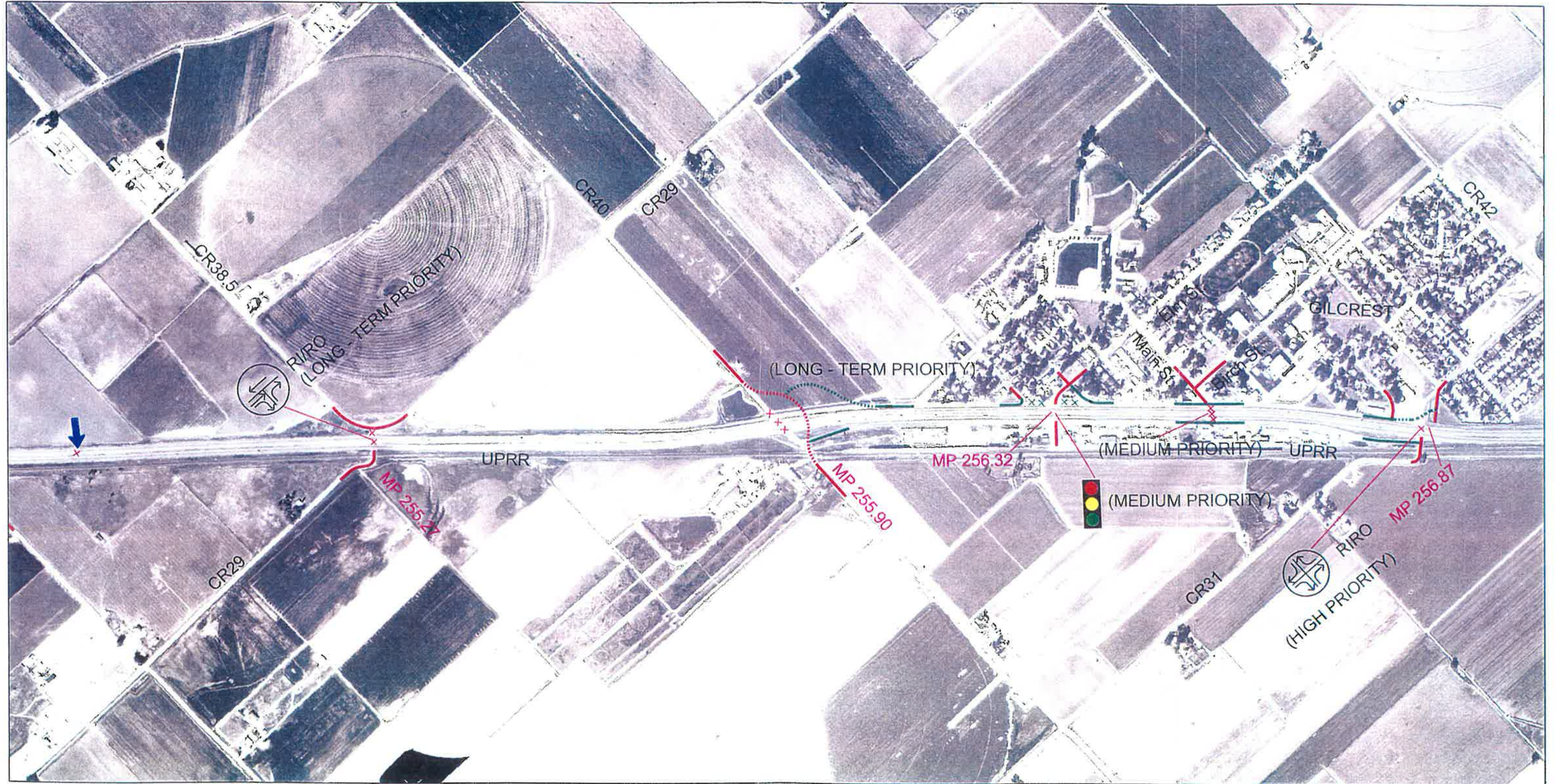


Figure A12

CR36 TO CR38



	IMPROVED ACCELERATION/DECELERATION LANES		NEW FRONTAGE ROAD		RAILROAD		EXISTING OR FUTURE TRAFFIC SIGNAL		3/4 ACCESS AT A T-INTERSECTION
	ACCESS TO REMAIN OPEN (CONDITIONALLY)		EXISTING FRONTAGE ROAD		HIGHWAY ACCESS OR MEDIAN CLOSING TO BE CLOSED		INTERSECTION IMPROVEMENT		3/4 ACCESS AT A 4-WAY INTERSECTION
	NEW PUBLIC ROADWAY		BRIDGE		RIGHT-IN / RIGHT-OUT ACCESS				
	EXISTING PUBLIC ROADWAY		RIGHT-IN / RIGHT-OUT ACCESS						

Figure A13
 GILCREST
 CR29 TO CR31

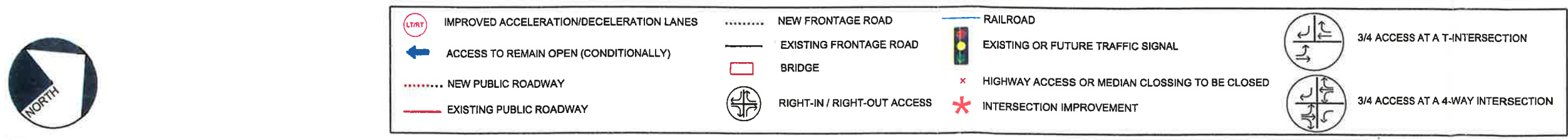
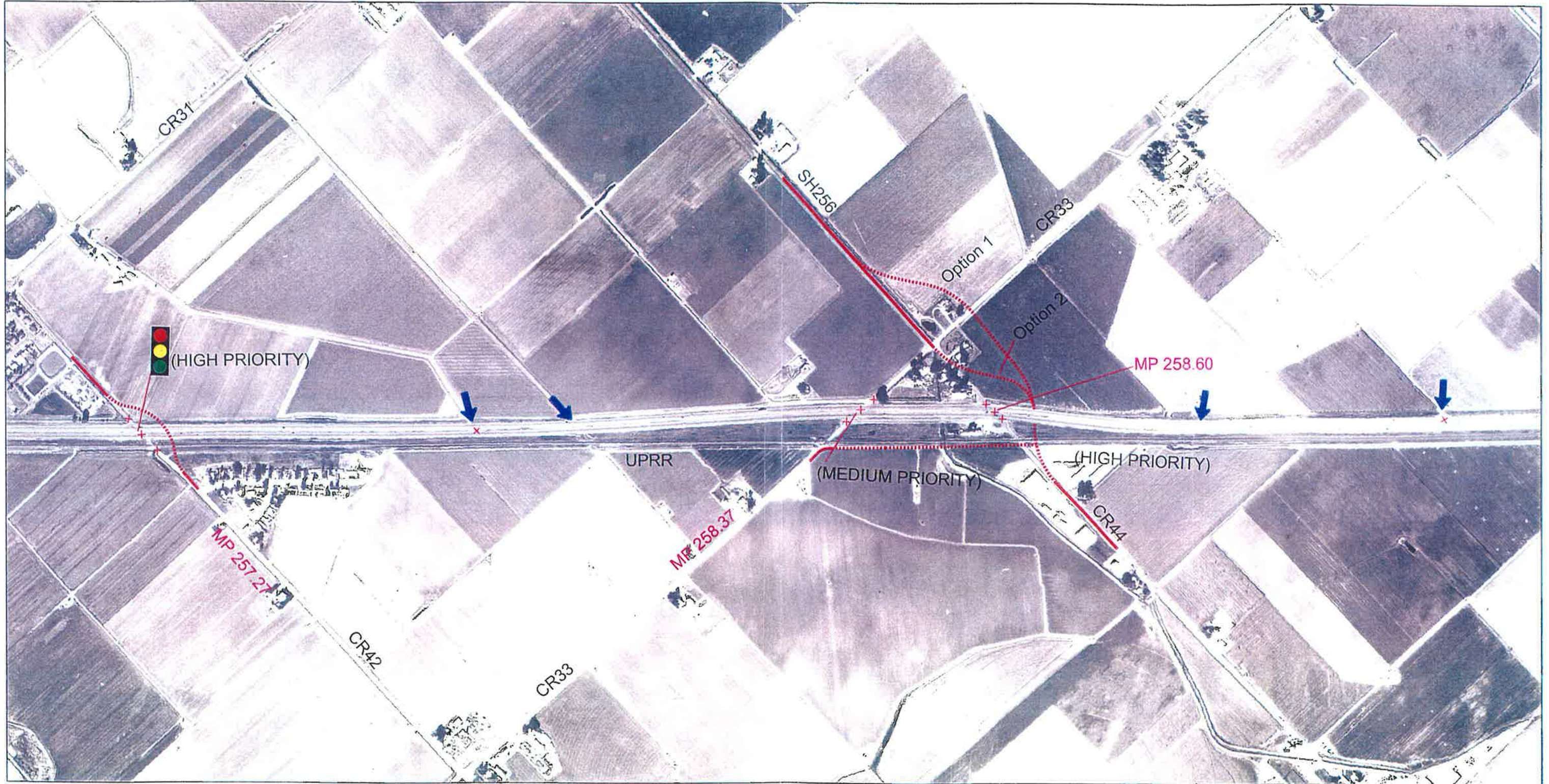


Figure A14

CR42 TO CR44

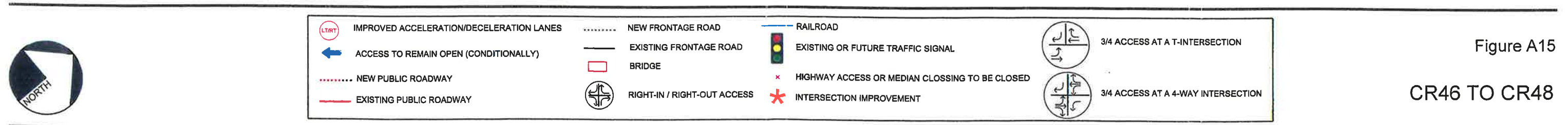


Figure A15

CR46 TO CR48

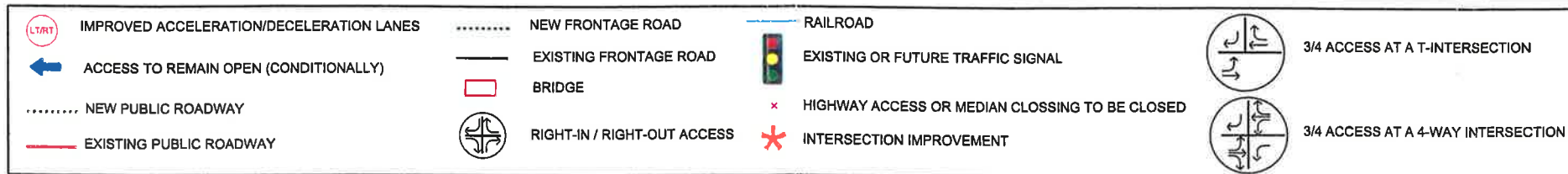


Figure A16
 LASALLE
 CR37 TO CR394

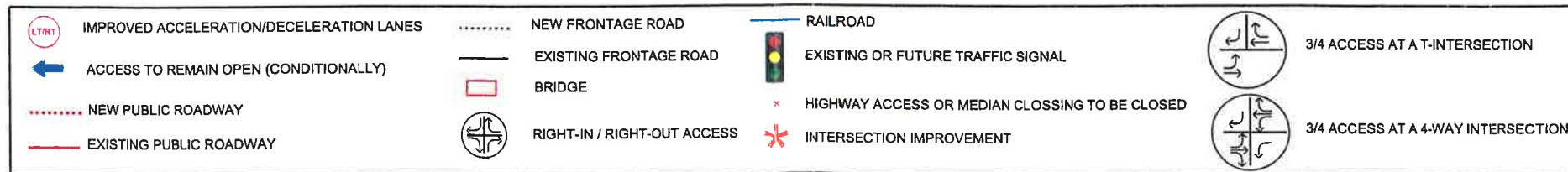
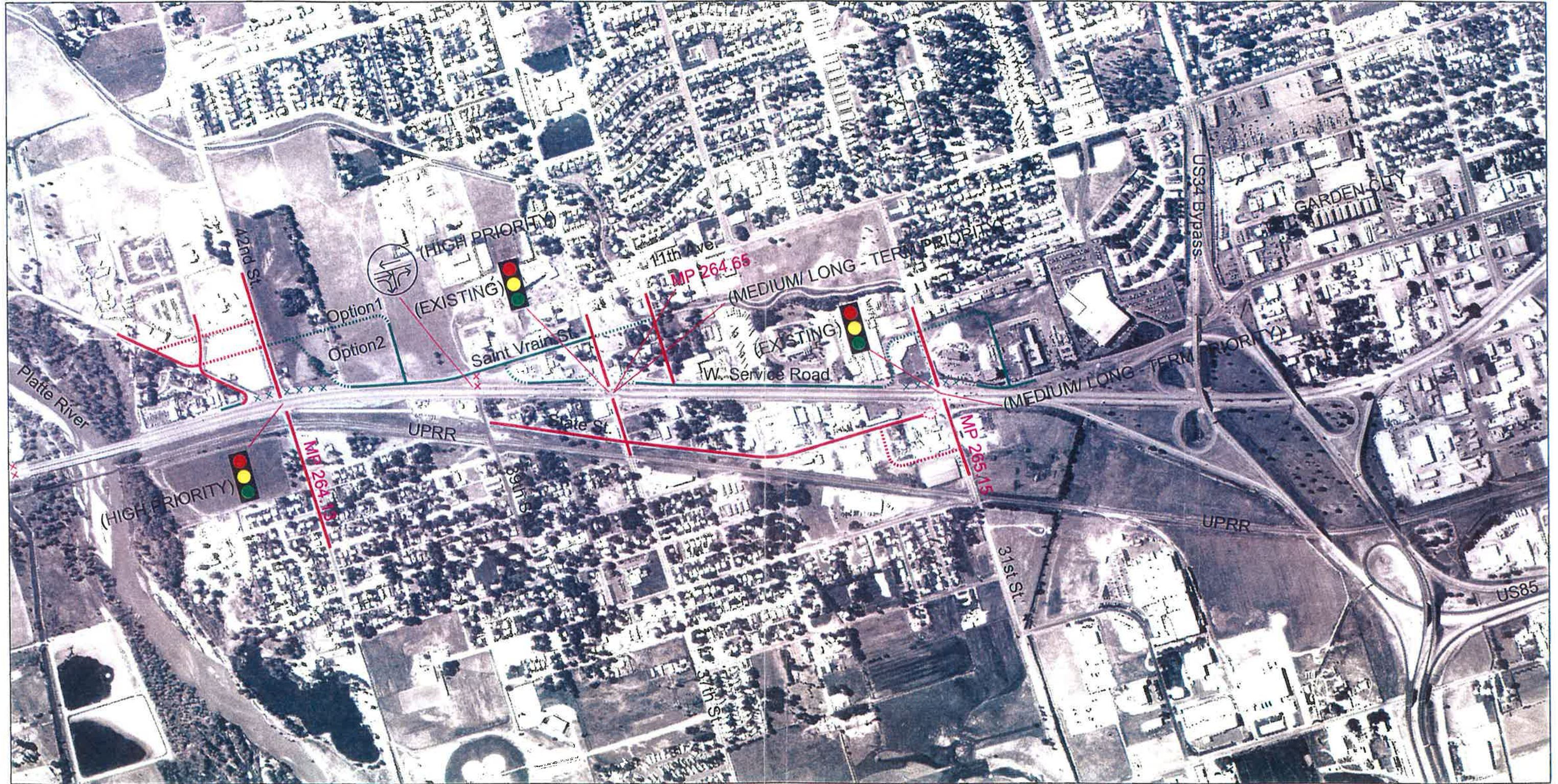
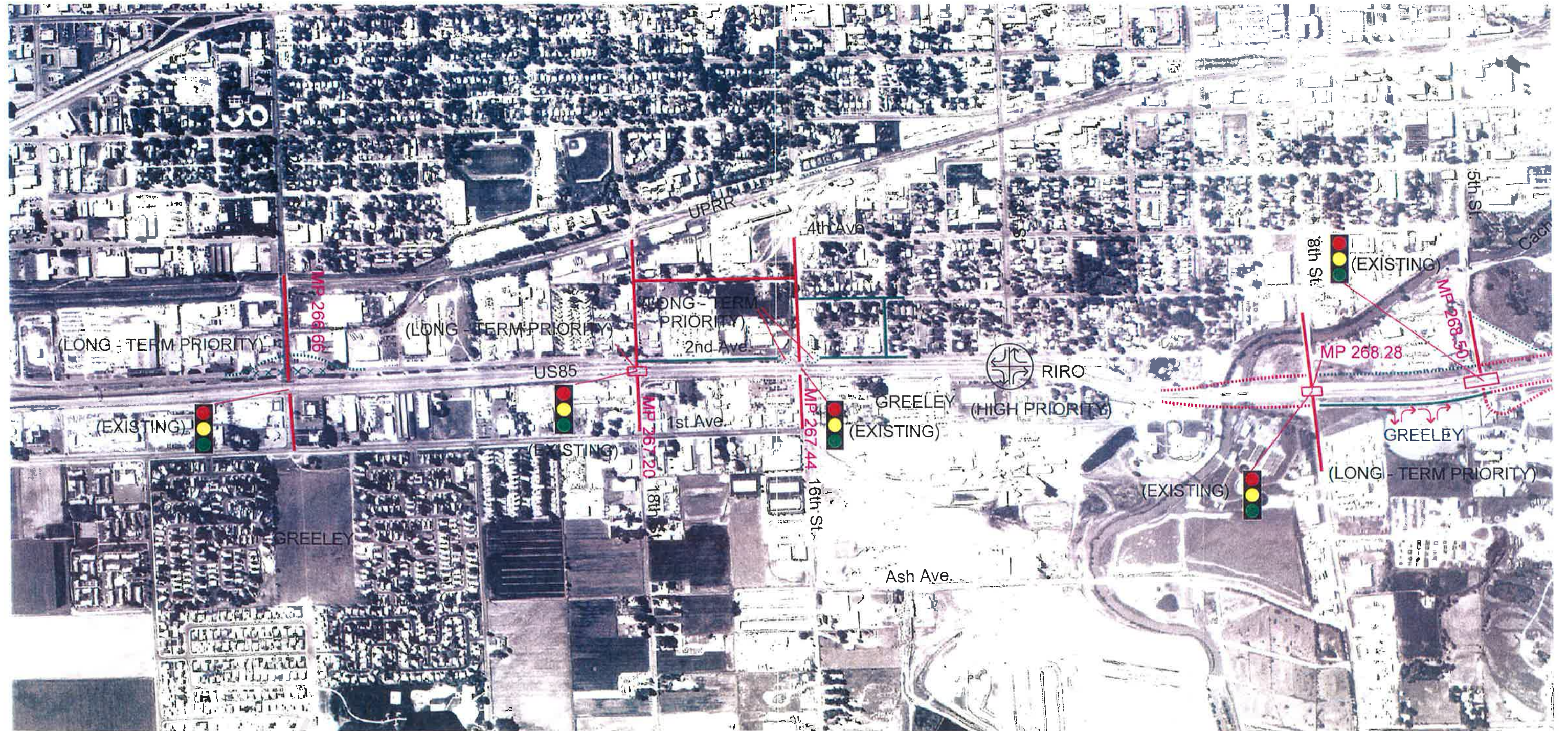


Figure A17
 EVANS
 42ND ST. TO US34

















 IMPROVED ACCELERATION/DECELERATION LANES	 NEW FRONTAGE ROAD	 RAILROAD
 ACCESS TO REMAIN OPEN (CONDITIONALLY)	 EXISTING FRONTAGE ROAD	 EXISTING OR FUTURE TRAFFIC SIGNAL
 NEW PUBLIC ROADWAY	 BRIDGE	 HIGHWAY ACCESS OR MEDIAN CROSSING TO BE CLOSED
 EXISTING PUBLIC ROADWAY	 RIGHT-IN / RIGHT-OUT ACCESS	 INTERSECTION IMPROVEMENT
		 3/4 ACCESS AT A T-INTERSECTION
		 3/4 ACCESS AT A 4-WAY INTERSECTION

Figure A18

GREELEY

22ND ST. TO 5TH. ST.

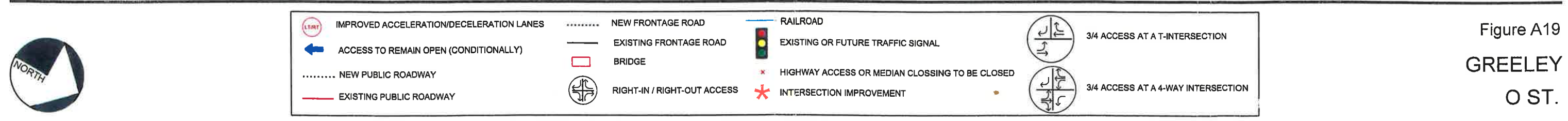


Figure A19
 GREELEY
 O ST.

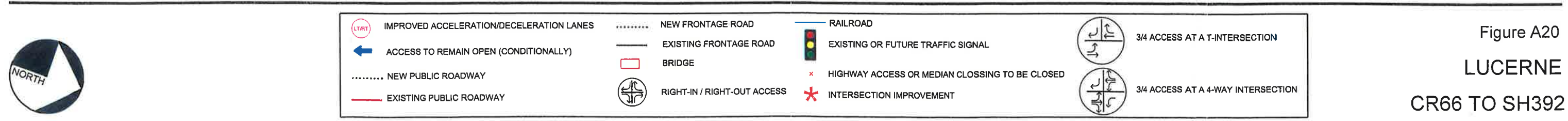
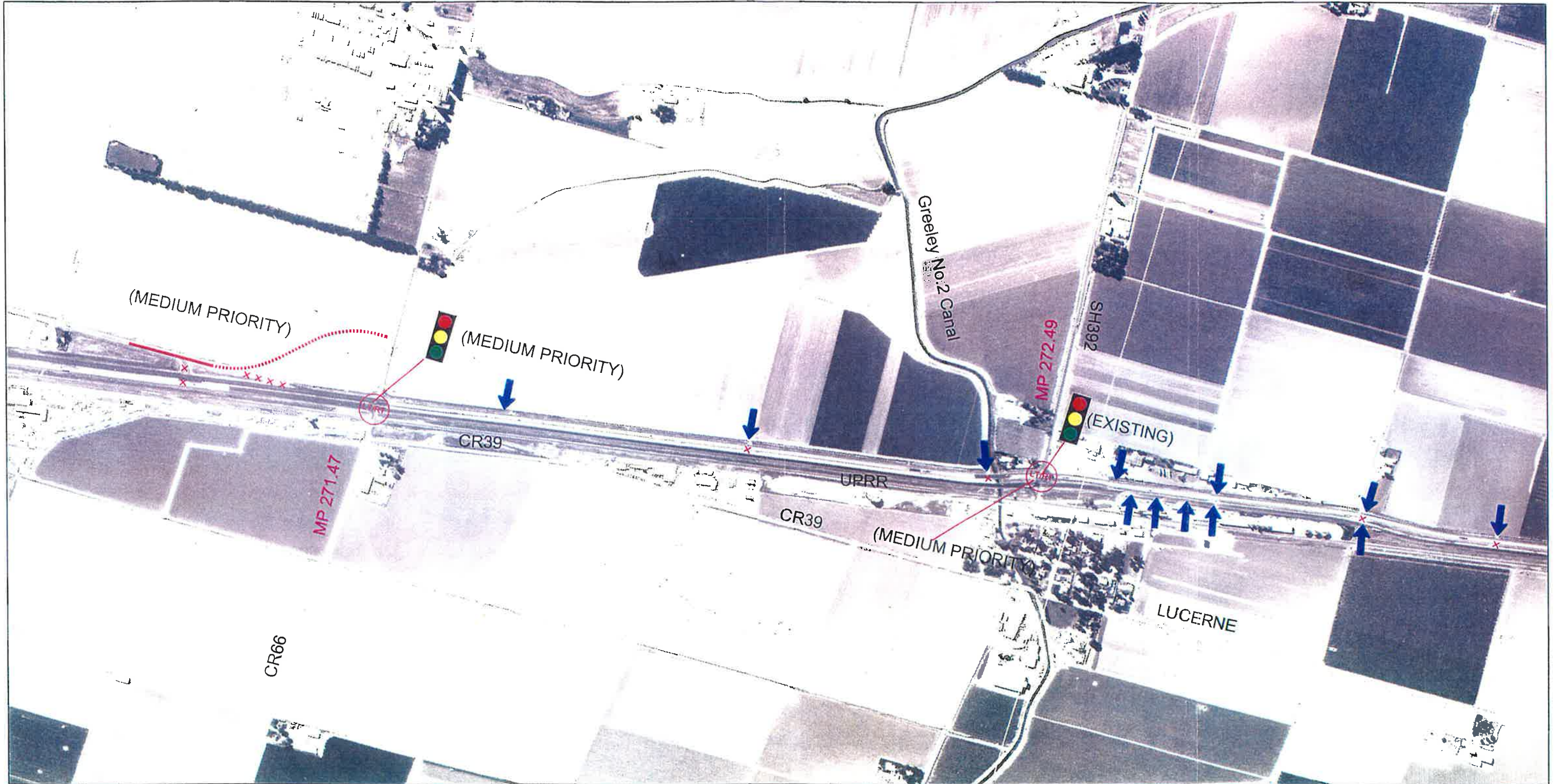


Figure A20
 LUCERNE
 CR66 TO SH392



	IMPROVED ACCELERATION/DECELERATION LANES		NEW FRONTAGE ROAD		RAILROAD		EXISTING OR FUTURE TRAFFIC SIGNAL		3/4 ACCESS AT A T-INTERSECTION
	ACCESS TO REMAIN OPEN (CONDITIONALLY)		EXISTING FRONTAGE ROAD		HIGHWAY ACCESS OR MEDIAN CLOSING TO BE CLOSED		INTERSECTION IMPROVEMENT		3/4 ACCESS AT A 4-WAY INTERSECTION
	NEW PUBLIC ROADWAY		BRIDGE		RIGHT-IN / RIGHT-OUT ACCESS				
	EXISTING PUBLIC ROADWAY								

Figure A21

CR70 TO CR72

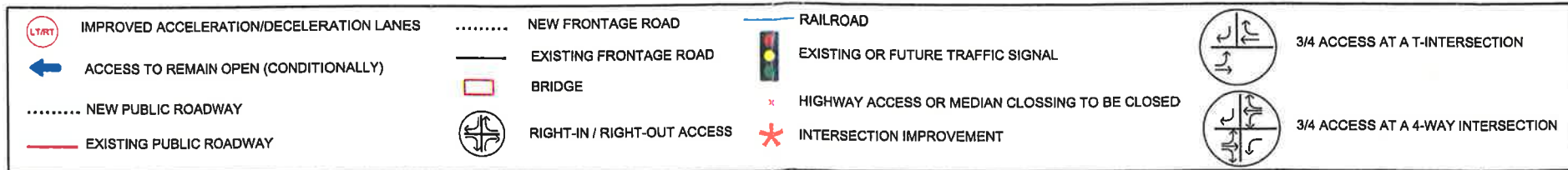


Figure A22
 EATON
 OAK DR. TO CR37

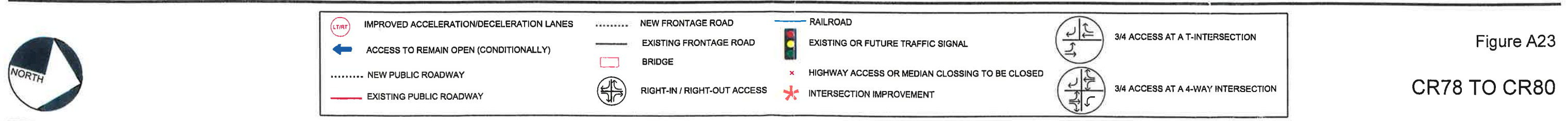


Figure A23

CR78 TO CR80